



EAST CONTRA  
COSTA COUNTY  
HABITAT  
CONSERVANCY

City of Brentwood

City of Clayton

City of Oakley

City of Pittsburg

Contra Costa County

# Public Advisory Committee

Thursday, February 9, 2023 at 1:00 p.m.

To slow the spread of COVID-19, as permitted by the Government Code Section 54953(e) (Assembly Bill 361), the Public Advisory Committee meeting will be accessible via tele-conference to all members of the public in lieu of a public gathering.

The Public Advisory Committee meeting may be accessed either online or by telephone using the following information:

Online: <https://cccounty-us.zoom.us/j/83191837168>

Meeting ID: 831 9183 7168

Phone: 888 278 0254 followed by access code 198675##

Persons who wish to address the Public Advisory Body during public comment or with respect to an item that is on the agenda may do so either online or by telephone. If accessing the meeting online, request to speak by clicking the “raise hand” function. If accessing the meeting by telephone, request to speak by dialing #2.

## Agenda

### 1) **Introductions**

Attendees are invited (but not required) to introduce themselves. This is also an opportunity for committee members (and meeting participants) to provide updates on their organization’s activities.

### 2) **Public comment on items not on the agenda.**

Public comments will also be accepted on each agenda item during discussion of that item. (3 minutes each)

### 3) **Consider approving the Meeting Record from the East Contra Costa County Habitat Conservancy (“Conservancy”) Public Advisory Committee (“PAC”) meeting on November 10, 2022\*.**

The Draft Meeting Record is attached for review.

### 4) **General Update on recent actions of the Governing Board and Staff Activities.**

The complete Board agenda and packet from December and past meetings are posted on the Conservancy’s website at: <http://www.co.contra-costa.ca.us/depart/cd/water/HCP/Meetings/GB.html>

Topics include:

- Update on AB361 (status of remote/hybrid/in-person meetings)
- PAC member recruitment
- Reports of storm impacts on preserve system
- 2022 Fee audit (February 2023 Board Meeting)

### 5) **Manzanita and Pine Tree Die off on Mount Diablo** – Sean Burke, Land Programs Director, Save Mount Diablo.

### 6) **Review of the RFP and Make a Recommendation to the Board on the Conservancy’s Small Grant Program.**

Review the draft Request for Proposals for the Conservancy’s small research grant program. Make a recommendation to the Conservancy’s Governing Board (to their February 27, 2023 meeting) on the program.

- 7) **Planning a field trip for May 11, 2023 PAC meeting\*** - See attached Preserve System map for reference.
- 8) **Confirmation of Calendar of 2023 PAC meetings**  
The PAC meets the 2<sup>nd</sup> Thursday of the month, quarterly on the schedule provided here: February 9, May 11, August 10, and November 9 from 1 p.m. - 3 p.m., location TBD.
- 8) **Adjourn.**

**\*Indicates there are attachments provided for the item.**

If you have questions about this agenda or desire additional meeting materials, you may contact Maureen Parkes of the Contra Costa County Department of Conservation and Development at 925-655-2909. The Conservancy will provide reasonable accommodation for persons with disabilities planning to participate in this meeting who contact staff at least 72 hours before the meeting.

# Public Advisory Committee

## **\*Draft Meeting Record\***

Thursday, November 10, 2022 at 1:00 p.m.

### 1) Introductions

#### *Committee Attendees:*

Private Permit Seekers	Conservation Advocates	Landowners/ Agriculturalists	Suburban/Rural Residents
<b>East Bay Leadership Council:</b> Mark Orcutt	<b>California Native Plant Society:</b> Lesley Hunt	<b>Open Seat</b>	<b>Arnica MacCarthy:</b> Present
<b>Discovery Builders Inc.:</b> Absent	<b>Friends of Marsh Creek Watershed:</b> Absent	<b>California Farmland Trust:</b> Lauren Fox	<b>Sharon Osteen:</b> Present
<b>Building Industry Association – Bay Area:</b> Lisa Vorderbrueggen	<b>Save Mount Diablo:</b> Absent	<b>Contra Costa County Farm Bureau:</b> Samantha Viano-D'Addabbo	<b>Open Seat</b>

#### *Others in attendance:*

Abby Fateman, Conservancy Staff  
Joanne Chiu, Conservancy Staff  
Allison Cloney, Nomad Ecology  
Josh Elson, Conservancy Staff  
Dana Terry, Nomad Ecology  
Allison Hodgkin, City of Pittsburg

### 2) Public comment on items not on the agenda. *None.*

### 3) Consider approving the Meeting Record from the East Contra Costa County Habitat Conservancy (“Conservancy”) Public Advisory Committee (“PAC”) meeting on August 11, 2022. *The Meeting Record was approved.*

### 4) General Update on recent actions of the Governing Board.

The complete Board agenda and packet from April and past meetings are posted on the Conservancy’s website at: <http://www.co.contra-costa.ca.us/depart/cd/water/HCP/Meetings/GB.html>

Topics include:

- Update on AB361 (remote meetings)
- Update on approval process for the Former Roddy Ranch Golf Course Restoration and Public Access Plan

*Ms. Fateman provided updates on the following topics:*

- *AB361: The PAC meetings will continue to be held remotely until further notice.*

- *Former Roddy Ranch Golf Course Restoration and Public Access Plan: The final Plan has been drafted and will be brought to the Conservancy's Governing Board for approval at the end of November.*
- *The Biologist Approval RFQ was released by the Conservancy in mid-October. Submittals are due by December 5, 2022.*

**5) Consideration Preliminary results of the San Joaquin kit fox camera trap study in East Contra Costa County** – Dana Terry, Nomad Ecology. Mr. Terry will present preliminary results from a study sponsored by the Conservancy on San Joaquin kit fox presence/absence as required by the HCP/NCCP.

*Mr. Terry from Nomad Ecology provided a presentation on the preliminary results of the San Joaquin kit fox camera trap surveys conducted on HCP/NCCP preserve system lands. Numerous photos of wildlife were captured in the study, but no kit foxes were detected. Ms. Hunt and Ms. McCarthy asked follow up questions about the use of culverts as road crossings by wildlife.*

**6) Confirmation ahead to 2023\***

PAC members will review and discuss the Draft 2023-24 Work Plan and make recommendations. See attached DRAFT 2023-24 Work Plan.

*Ms. Fateman provided an overview of the Draft Work Plan highlighting program administration tasks such as facilitation of public input opportunities and implementation of the legislative platform, preserve management tasks, and habitat restoration tasks. Ms. Hunt raised a question about the status of the endowment. Ms. Fateman noted the endowment was established in 2020 and since then the market has seen some fluctuation. However, the fund balance is relatively the same as the initial deposit. Financial experts oversee investment strategy. As a reminder, the endowment goal is to be at \$80M by the end of the permit term.*

*Ms. Fateman set a deadline of one week in advance of the PAC meeting date to provide comments on the Draft 2023-24 Work Plan.*

**7) Conduct annual review of the composition of the PAC\***

PAC members will review and consider recommendations to the Board on this matter. See attached DRAFT Board memo.

*Ms. Fateman provided updates on recent resignations from the PAC and new openings. She reviewed member attendance from the past year. It was noted that Discovery Builders has not attended any of the four meetings held in 2022, and that they have not responded to an inquiry from Ms. Fateman about whether they wish to continue to participate in the PAC. The PAC supported the idea of seeking a replacement member to represent private permit seekers.*

*PAC members expressed interest in keeping the meeting remote except for the field trip meeting. Ms. Fateman noted she will raise this with the Board and legal counsel for discussion.*

**8) Confirmation of Calendar for 2023 PAC meetings.**

The PAC meets the 2nd Thursday of the month, quarterly. The 2023 meetings of the PAC are February 9, May 11, August 10, November 9, 2023 from 1 p.m. - 3 p.m.

*Ms. Hunt suggested further discussion for scheduling the field trip date at the February meeting. The PAC approved the meeting schedule for 2023.*

**2:30 Adjourn.** *Meeting adjourned to February 9, 2023.*



# East Contra Costa County Habitat Conservancy Science and Research Grant Program Request for Proposals 2023

---

## Overview

The East Contra Costa County Habitat Conservancy (Conservancy) is a joint exercise of powers authority formed by Contra Costa County and the Cities of Brentwood, Clayton, Oakley, and Pittsburg to implement the East Contra Costa County Habitat Conservation Plan/Natural Community Conservation Plan (HCP/NCCP or Plan). The HCP/NCCP provides a framework to protect natural resources in eastern Contra Costa County, while streamlining the environmental permitting process for impacts on endangered species. The Plan also provides comprehensive species, wetlands, and ecosystem conservation and contributes to the recovery of endangered species in northern California. The complete Plan can be downloaded from the Conservancy website at [www.cocohcp.org](http://www.cocohcp.org).

The heart of the conservation strategy is a system of new preserves linked to existing protected areas to form a network of protected lands in eastern Contra Costa County. In addition to supporting ecosystem processes, habitat, and species, the preserves will also support other uses such as recreation, grazing, and crop production, as long as these uses are compatible with the biological goals and objectives of the HCP/NCCP. The conservation strategy is designed to achieve the biological goals and objectives established for each natural community and the covered species that each community supports (Chapter 2 of the HCP/NCCP). The Conservancy specifically targets the conservation of habitats that support 28 species. These species include plants, invertebrates, amphibians, reptiles, birds, and mammals. A full list of the species is included as Attachment A (Table 3-8).

Under this Science and Research Grant Program (Grant Program), the Conservancy may fund research that endeavors to illuminate, and where possible to resolve, uncertainties associated with adaptive management of natural communities and covered species. Research selected for funding will aid in achieving the biological goals and objectives of the Plan and inform management actions and/or contribute to the general understanding of a covered species. Such research will generally relate to the following:

- Efficacy of natural community enhancement/creation/restoration techniques,
- Refining ecological requirements of covered species,
- Response of covered species and natural communities to implementation of management actions within the Preserve System, or
- Strategies to conduct management or monitoring actions that support and/or lead to better management of natural communities, covered species, **and/or on-site cultural resources.**

## Additional Information Provided

- Attachment A: Species Target List – Excerpt from Chapter 3, Table 3-8.
- Attachment B: Current Land Acquisition Map (Note: these properties, though not open to the public are available for field work. Applicants are encouraged to conduct research on the newly preserved lands.)
- Attachment C: Excerpt from Chapter 7, Table 7-2: Potential Research Projects (Note: these were ideas set forth in the plan prior to implementation. Other research topics that inform land and species management actions are encouraged).
- Attachment D: Excerpt from Chapter 5, Table 5-1: Natural Community-level and Additional Species-specific Biological Goals and Objectives.
- KMZ data (can be used in Google Earth) for the current land acquisitions is available upon request. Please email Maureen Parkes at [Maureen.Parkes@dcd.cccounty.us](mailto:Maureen.Parkes@dcd.cccounty.us) to request the file.

## Eligibility

The Conservancy seeks project proposals across all scientific disciplines that advance the Plan’s conservation strategy (HCP/NCCP Chapter 5), monitoring and adaptive management program (HCP/NCCP Chapter 7), and/or informs successful compliance with the biological goals and objectives of the HCP/NCCP (HCP/NCCP Table 5-1, Attachment D). Potential research projects identified by the HCP/NCCP are included in HCP/NCCP Table 7-2 (Attachment C). The outreach and education activities specified in the Plan may also be funded as a part of this Grant Program.

Projects must be located within the HCP/NCCP’s Inventory Area. Projects may be proposed by a governmental agency, academic institution, consulting firm, non-profit, or other professional scientific entity, or a partnership between such organizations. The applicant must be able to enter into a contract with the Conservancy and meet insurance and tax reporting requirements. The applicant must also be able to satisfy insurance requirements for the East Bay Regional Park District encroachment permit.

This grant program is intended to produce relevant scientific information that can inform successful conservation and recovery activities. It is intended to recruit new agencies and people to engage in activities on the Preserve.

## Grant Program Terms and Conditions

### Grant Term

The maximum term of the grant agreement will be 2 years unless otherwise agreed to by all parties to the agreement.

### Access Authorization

Prior to commencing work under this grant, individuals working on the grant must coordinate with the Conservancy to ensure proper access authorization is established. This will involve coordination with the Conservancy and the East Bay Regional Park District staff.

## Budget

There is a budget of up to \$30,000 for this round of awards (2-year cycle). The Conservancy will consider awards of any amount up to \$30,000. The Conservancy may choose not to award all of the allocated funds or expand the funds if budget allows. Note that overhead costs may not exceed 5% of the requested funds. Identify any other confirmed sources of funding for the proposed research. Please discuss if your proposal is scalable if full funding is not available.

## Matching Funds

The Conservancy has limited funds. It is anticipated that funding provided by the Conservancy will be matched or supplemented by other entities to increase the level of research and to achieve results that integrate broader issues in the research community. Projects providing 25% or more of the project cost as matching or supplemental funds may be awarded more points than those that provide less than 25% matching funds. Matching fund sources may include contributions derived from other available funding sources, program fees, and/or the value of third-party in-kind services (e.g., volunteer and staff services, pro-bono professional services).

## Schedule and Reporting

Each proposal must include a project schedule detailing approximate dates of task(s) completion with milestones. If selected, during implementation, applicant will be required to provide an update via email to the Conservancy of project progress at least once every six months. An alternative schedule may be proposed to align with project milestones. A final report, including identified deliverables with a possible presentation to the Conservancy's Public Advisory Committee, will be due at project completion.

# Submittal Instruction and Review Process

Before submitting the proposal, check all calculations and ensure that all required items listed below are addressed. Inaccuracies and omissions will be grounds for rejection. All proposals will become part of the Conservancy's official public records and will be available for public review.

## Proposal Submittal Requirements

Narratives should be formatted in 12 point typed font and minimum margins of one inch. While there is no restriction on page length, applicants should convey the purpose of the proposal as succinctly as appropriate to convey the necessary information. **All proposals must have separate headings to address each of the seven required elements listed below:**

1. **APPLICANT:** Identify the organization, contact information (i.e., phone, email, mailing address), and individuals who will be implementing the proposal. Include qualifications of organization and key staff or volunteers.
2. **PROJECT TITLE AND DESCRIPTION:** Provide a complete project description including: title of the project, necessary activities and duration of activities. If the project is associated with a specific location, please include a map. Include a list of tasks and/or activities as well as deliverables.

3. **RELATIONSHIP TO THE HCP/NCCP:** Include information on how the project advances the Plan’s conservation strategy, supports the land and species management, and/or informs successful compliance with the biological goals and objectives of the HCP/NCCP.
4. **BUDGET:** Provide a budget that includes the requested amount of funding and the proposed use of the funds. If the project includes distinct tasks, the budget should list each separate task for which funds are being requested. **Clearly highlight the amount of funds requested** as well as any other contributions to the projects.
5. **MATCHING FUNDS:** If matching funds are being leveraged, provide relevant information on any matching funds.
6. **PERMITS:** List any local, state or federal permit clearances that have been acquired and/or are needed, where applicable. If a recovery permit(s) pursuant to Section 10(a)(1)(a) of the ESA is required to complete the research, identify the individual(s) with that qualification.
7. **SCHEDULE:** Include a project schedule detailing approximate dates of task(s) (Start and end Dates) and deliverables. The earliest that work funded by this grant source can start is July 1, 2021.

Proposals must be submitted **electronically as a PDF** to Maureen Parkes at [Maureen.Parkes@dcd.cccounty.us](mailto:Maureen.Parkes@dcd.cccounty.us) by Thursday, July 27, 2023 at 5 p.m.

### Criteria for Decision-Making

Proposals will be evaluated on the following criteria, with points awarded up to the following maximum points per criteria (Max: 110 points):

- Organizational capacity and relevant experience – 10 points
- Evidence project supports the conservation strategy and/or biological goals and objectives of the HCP/NCCP – 30 points
- Project addresses a data/information gap in land and species management practices in the Preserve System – 25 points
- Budget narrative and financial management/ percentage of project cost provided by Applicant’s Matching Funds – 20 points
- Project readiness – Extent that the organization has completed initial planning and permitting requirements and approvals – 15 points
- Discretionary Points: Available for additional aspects of the project or applicant qualifications including: engaging youth/students, volunteers, public education and outreach. Additional consideration will be given to applicants with no open research grants with the Conservancy. - 10 points

### Schedule

The Conservancy will accept research proposals until Thursday, July 27, 2023 at 5 p.m. The Conservancy will review applications at the August 10<sup>th</sup> Public Advisory Committee meeting and consider final funding decisions on the proposals at the August 28<sup>th</sup> Conservancy Governing Board meeting. Work may begin on research projects as early as September 1<sup>st</sup>, 2023 if all administrative paperwork (contracts, insurance, permits, EBRPD scientific research permit, etc.) are complete. These dates are subject to change.

All meetings are open to the public. Agendas for these meetings are available on the Conservancy's website. Depending on the proposals received and/or the funding available, the Conservancy may choose to fund multiple proposals. The Conservancy may also choose to fund no proposals.

### **Attachments**

- Attachment A: Species Target List – Excerpt from Chapter 3, Table 3-8.
- Attachment B: Current Land Acquisition Map (Note these properties, though not open to the public are available for field work. Applicants are encouraged to conduct research on the newly preserved lands.)
- Attachment C: Excerpt from Chapter 7, Table 7-2: Potential Research Projects (Note: these were ideas set forth in the plan prior to implementation. Other research topics that inform land and species management actions are encouraged).
- Attachment D: Excerpt from Chapter 5, Table 5-1: Natural Community-level and Additional Species-specific Biological Goals and Objectives and Associated Conservation Measures.
- Attachment E: Past and Current Funded Research Efforts sponsored by the ECCC Habitat Conservancy

**Table 3-8.** Special-Status Species Proposed for Coverage

Common Name	Scientific name	Status <sup>1</sup>	
		State	Federal
<b>Mammals</b>			
Townsend's western big-eared bat	<i>Corynorhinus townsendii townsendii</i>	CSC	–
San Joaquin kit fox	<i>Vulpes macrotus mutica</i>	ST	FE
<b>Birds</b>			
Tricolored Blackbird	<i>Agelaius tricolor</i>	CSC-1	–
Golden Eagle	<i>Aquila chrysaetos</i>	FP	BGPA
Western Burrowing Owl	<i>Athene cunicularia hypugea</i>	CSC-1	–
Swainson's Hawk	<i>Buteo swainsoni</i>	ST	–
<b>Reptiles</b>			
Silvery legless lizard	<i>Anniella pulchra pulchra</i>	CSC	–
Alameda whipsnake	<i>Masticophis lateralis euryxanthus</i>	ST	FT
Giant garter snake	<i>Thamnophis gigas</i>	ST	FT
Western pond turtle	<i>Clemmys marmorata</i>	CSC	–
<b>Amphibians</b>			
California tiger salamander	<i>Ambystoma californiense</i>	CSC	FT
California red-legged frog	<i>Rana aurora draytonii</i>	–	FT
Foothill yellow-legged frog	<i>Rana boylei</i>	CSC	–
<b>Invertebrates</b>			
Longhorn fairy shrimp	<i>Brachinecta longiantenna</i>	–	FE
Vernal pool fairy shrimp	<i>Brachinecta lynchi</i>	–	FT
Midvalley fairy shrimp	<i>Brachinecta mesovallensis</i>	–	–
Vernal pool tadpole shrimp	<i>Lepidurus packardii</i>	–	FE
<b>Plants</b>		<b>CNPS</b>	
Mount Diablo manzanita	<i>Arctostaphylos auriculata</i>	1B	–
Brittlescale	<i>Atriplex depressa</i>	1B	–
San Joaquin spearscale	<i>Atriplex joanquiniana</i>	1B	–
Big tarplant	<i>Blepharizonia plumosa</i>	1B	–
Mount Diablo fairy lantern	<i>Calochortus pulchellus</i>	1B	–
Recurved larkspur	<i>Delphinium recurvatum</i>	1B	–
Round-leaved filaree	<i>Erodium macrophyllum</i>	1B	–
Diablo helianthella	<i>Helianthella castanea</i>	1B	–
Brewer's dwarf flax	<i>Hesperolinon breweri</i>	1B	–
Showy madia	<i>Madia radiata</i>	1B	–
Adobe navarretia	<i>Navarretia nigelliformis</i> ssp. <i>nigelliformis</i>	–	–

<sup>1</sup>Status:**Federal**

FE Federally Endangered

FT Federally Threatened

BGPA Bald and Golden Eagle Protection Act

**State**

ST State Listed as Threatened

CSC California Special Concern Species

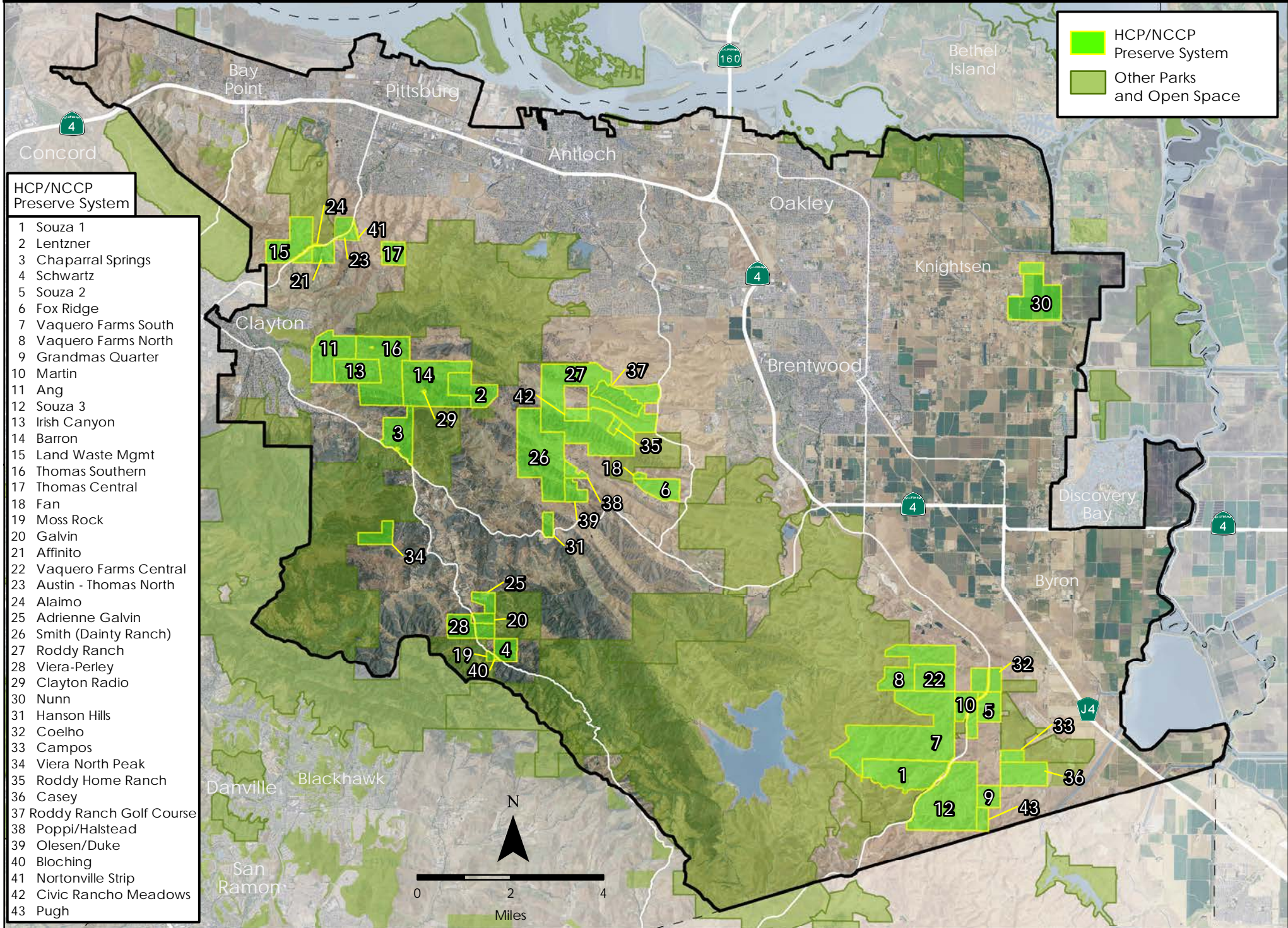
CSC-1 Bird Species of Special Concern; First Priority

FP Fully Protected

**California Native Plant Society**

1B Rare or Endangered in California and Elsewhere

# East Contra Costa County Habitat Conservancy Preserve System Lands as of 03/07/2022



**Table 7-2.** Potential Research Projects

Conservation Measure (Chapter 5 of the Plan)	Potential Research Projects
<b>2.2</b> Manage Wetlands and Ponds	<ul style="list-style-type: none"> <li>• Determine the effectiveness of small checkdams in arresting stream-channel erosion in seasonal alkali wetlands.</li> <li>• Use experimental-management techniques to test different creation/restoration methods (i.e., use pre- and post-treatment monitoring, replication, controls).</li> <li>• Conduct pilot project to determine the relative benefit to California red-legged frog, California tiger salamander, and western pond turtle of different pond treatments such as access/exclusion by livestock, vegetated/unvegetated banks, and pond depth and duration.</li> </ul>
<b>2.4</b> Manage Grassland	<ul style="list-style-type: none"> <li>• Develop a pilot project to determine the feasibility of grassland enhancement on a large scale: investigate the effect of management actions on native grassland species.</li> <li>• Develop projects that test the effect of different grazing practices (e.g., grazing intensity, duration, season, type of livestock) on the maintenance and regeneration of native grasses and forbs. If possible, combine grazing treatments with other management techniques such as prescribed burns and hand seeding to detect interactions among management treatments.</li> </ul>
<b>2.5</b> Manage Natural Burrow Availability and Prey Base in Grasslands	<ul style="list-style-type: none"> <li>• Develop a pilot project of management methods to increase prey for covered grassland species. Consider using methods already developed and applied to the Los Vaqueros Watershed to monitor ground squirrel population density as an indicator of habitat quality for San Joaquin kit fox.</li> </ul>
<b>2.6</b> Manage Oak Woodland and Oak Savanna	<ul style="list-style-type: none"> <li>• Test alternative methods of oak plantings, irrigation, and herbivory protection to maximize sapling survival.</li> </ul>
<b>2.10</b> Restore Streams and Riparian Woodland/Scrub to Compensate for Habitat Loss and Increase Biodiversity	<ul style="list-style-type: none"> <li>• Initiate a pilot project to develop restoration measures for individual sites or stream reaches based on specific geomorphic, hydraulic, and hydrologic conditions; extent and quality of existing habitats (e.g., percent native vegetation and presence/absence of exotic wildlife such as bullfrogs or cowbirds); existing wildlife use; and the potential for adverse effects (e.g., disturbance and/or removal of existing wetland habitat).</li> </ul>

**Table 7-2.** Continued

Conservation Measure (Chapter 5 of the Plan)	Potential Research Projects
<b>3.1</b> Protect and Enhance Roosting Habitat for Townsend's Western Big-eared Bat	<ul style="list-style-type: none"> <li>• Develop a pilot project to evaluate the suitability of artificial hibernacula for use by Townsend's big-eared bat.</li> </ul>
<b>3.4</b> Temporarily Create Artificial Burrows in Grasslands to Attract and Retain Burrowing Owls	<ul style="list-style-type: none"> <li>• Determine the most effective artificial-burrow designs and placement strategies for attracting burrowing owls and ensuring reproductive success of owls that use artificial burrows.</li> </ul>
<b>3.5</b> Install Temporary Artificial Perches to Attract and Retain Burrowing Owl	<ul style="list-style-type: none"> <li>• Determine the effectiveness of artificial perch sites in attracting use by burrowing owls and the most effective perch designs and placement strategies (e.g., height above ground level, location relative to available burrows).</li> </ul>
<b>3.10</b> Plant Salvage when Impacts are Unavoidable	<ul style="list-style-type: none"> <li>• Use pilot projects to develop methods for salvaging and propagating covered-plant species from impact sites and for reestablishing salvaged plants at new locations to establish new populations.</li> </ul>

**Table 5-1.** Natural Community-level and Additional Species-specific Biological Goals and Objectives and Associated Conservation Measures

<b>Covered Species Expected to Benefit from Wetlands (and other Aquatic) Biological Goals and Objectives:</b>		
<p>Tricolored blackbird California red-legged frog California tiger salamander Giant garter snake Western pond turtle Vernal pool fairy shrimp</p>	<p>Vernal pool tadpole shrimp Longhorn fairy shrimp Midvalley fairy shrimp Adobe navarretia Brittlescale [Grassland]</p>	<p><b>Notes:</b></p> <ul style="list-style-type: none"> <li>Goals and objectives are organized by natural community type. Community-level goals and objectives that support multiple covered species are presented first within each section. Species-specific goals and objectives are developed and presented only when the community-level goals do not adequately address the species' needs.</li> <li>Habitat shown in brackets is the habitat with which the species is primarily associated; any specific Biological Goals and Objectives pertaining to this species are addressed in their primary habitat.</li> </ul>
<b>Wetlands (and other Aquatic) Biological Goals and Objectives</b>	<b>Conservation Measures</b>	
<p><b>Goal 1: Preserve wetlands and ponds in the inventory area</b></p> <p><b>Objective 1.1.</b> Acquire perennial wetlands at a ratio of 1:1 of wetted acres (estimated to be 75 wetted acres with the maximum urban development area) and protect as part of the Preserve System</p> <p><b>Objective 1.2.</b> Acquire seasonal wetlands at a ratio of 3:1 of wetted acres (estimated to be 177 acres of seasonal wetland complex with the maximum urban development area) and protect as part of the Preserve System</p> <p><b>Objective 1.3.</b> Acquire alkali wetlands at a ratio of 3:1 of wetted acres (estimated to be 96 acres of alkali wetland complex with the maximum urban development area) and protect as part of the Preserve System in Zones 2, 5, and 6</p> <p><b>Objective 1.4.</b> Acquire ponds at a ratio of 2:1 of wetted acres (estimated to be 16 wetted acres with the maximum urban development area) and protect as part of the Preserve System</p> <p><b>Objective 1.5.</b> Acquire at least seven of the 13 ponds in Subzone 2c to provide suitable breeding habitat for tricolored blackbird, California tiger salamander, California red-legged frog, and/or western pond turtle</p> <p><b>Objective 1.6.</b> Acquire slough/channel at a ratio of 0.5:1 of wetted acres (estimated to be 36 wetted acres with the maximum urban development area) and protect as part of the Preserve System</p> <p><b>Objective 1.7.</b> Acquire aquatic (open water) at a ratio of 1:1 of wetted acres (estimated to be 17 wetted acres with the maximum urban development area) and protect as part of the Preserve System</p> <p><b>Objective 1.8.</b> Preserve and maintain contiguous wetland-upland complexes</p>	<p><b>Conservation Measure 1.1.</b> Acquire Lands for Preserve System</p> <p><b>Conservation Measure 1.3.</b> Prepare and Implement Agricultural Management Plans for Cultivated Agricultural Lands</p>	

Table 5-1. Continued

Wetlands (and other Aquatic) Biological Goals and Objectives	Conservation Measures
<p><b>Goal 2: Maintain and enhance hydrogeomorphic and ecological function of wetlands and ponds to promote covered species, native biological diversity, and habitat heterogeneity</b></p> <p><b>Objective 2.1.</b> Maintain or increase native emergent vegetation where appropriate</p> <p><b>Objective 2.2.</b> Reduce sediment deposition and transport where appropriate</p> <p><b>Objective 2.3.</b> Maintain or increase wetland and pond capacity and water duration as appropriate.</p> <p><b>Objective 2.4.</b> Maintain or increase flows to and connectivity among wetlands and wetland complexes as appropriate</p> <p><b>Objective 2.5.</b> Eliminate or reduce non-native animals</p> <p><b>Objective 2.6.</b> Eliminate or reduce exotic plants</p> <p><b>Objective 2.7.</b> Maintain or enhance upland habitat in close proximity to wetlands and ponds to support the life-history requirements of wetland-dependent covered species</p>	<p><b>Conservation Measure 1.2.</b> Prepare and Implement an Exotic Plant Control Program for the Preserve System</p> <p><b>Conservation Measure 1.3.</b> Prepare and Implement Management Plans for Cultivated Agricultural Lands</p> <p><b>Conservation Measure 2.2.</b> Manage Wetlands and Ponds</p>
<p><b>Goal 3: Restore wetlands and create ponds in Preserve System to compensate for permanent loss of these habitats</b></p> <p><b>Objective 3.1.</b> Restore perennial wetlands in-kind at a ratio of 1:1 of wetted acres (estimated to be 75 wetted acres with the maximum urban development area)</p> <p><b>Objective 3.2.</b> Restore alkali wetlands in-kind at a ratio of 2:1 of wetted acres (estimated to be 64 acres of alkali wetland complex with the maximum urban development area)</p> <p><b>Objective 3.3.</b> Restore seasonal wetlands in-kind at a ratio of 2:1 of wetted acres (estimated to be 118 acres of seasonal wetland complex with the maximum urban development area)</p> <p><b>Objective 3.4.</b> Create ponds in-kind at a ratio of 1:1 (estimated to be 8 acres with the maximum urban development area) to support California tiger salamander, California red-legged, and/or western pond turtle</p> <p><b>Objective 3.5.</b> Compensate for loss of slough/channel by either restoring slough/channel at a ratio of 1:1 where feasible or restoring riparian woodland/scrub in Zone 6 at a ratio of 0.5:1</p> <p><b>Objective 3.6.</b> Compensate for loss of aquatic (open water) by creating ponds at a ratio of 0.5:1 (estimated to be 9 acres of ponds with the maximum urban development area) to support California tiger salamander, California red-legged, and/or western pond turtle</p> <p><b>Objective 3.7.</b> Compensate for loss of aquatic (open water) by creating ponds at a ratio of 0.5:1 (estimated to be 9 acres of ponds with the maximum urban development area) to support California tiger salamander, California red-legged, and/or western pond turtle</p>	<p><b>Conservation Measure 2.3.</b> Restore Wetlands and Create Ponds</p>

Table 5-1. Continued

<b>Wetlands (and other Aquatic) Biological Goals and Objectives</b>	<b>Conservation Measures</b>
<p><b>Goal 4: Restore wetlands and create ponds in the Preserve System to contribute to recovery of covered species</b></p> <p><b>Objective 4.1.</b> Restore 10 wetted acres of perennial wetlands</p> <p><b>Objective 4.2.</b> Restore 5 wetted acres of alkali wetlands</p> <p><b>Objective 4.3.</b> Restore 20 wetted acres of seasonal wetlands</p> <p><b>Objective 4.4.</b> Create 8 acres of ponds to support California tiger salamander, California red-legged, and/or western pond turtle</p>	<p><b>Conservation Measure 2.3.</b> Restore Wetlands and Create Ponds</p>
<p><b>Goal 5: Enhance habitat for tricolored blackbird in the Preserve System</b></p> <p><b>Objective 5.1.</b> Restore perennial wetlands so that at least 25% will provide breeding habitat</p> <p><b>Objective 5.2.</b> Restore perennial wetlands to provide breeding habitat at least 1 mile from black-crowned night heron colonies and within flight distance of blackbird foraging habitat</p>	<p><b>Conservation Measure 2.2.</b> Manage Wetlands and Ponds</p> <p><b>Conservation Measure 2.3.</b> Restore Wetlands and Create Ponds</p> <p><b>Conservation Measure 3.2.</b> Minimize Predation on Tricolored Blackbird Colonies</p>
<p><b>Goal 6: Compensate for temporary and permanent loss of giant garter snake habitat</b></p> <p><b>Objective 6.1.</b> Replace suitable upland and aquatic habitat at a ratio of 1:1 to 3:1 according to USFWS guidelines</p> <p><b>Objective 6.2.</b> Emphasize the restoration of suitable habitat for giant garter snake on Dutch Slough</p>	<p><b>Conservation Measure 3.6.</b> Compensate for Loss of Giant Garter Snake Habitat</p>
<p><b>Goal 7: Maintain or increase the population and distribution of western pond turtle</b></p> <p><b>Objective 7.1.</b> Increase number and distribution of basking sites and underwater refugia in ponds</p>	<p><b>Conservation Measure 3.7.</b> Enhance Habitat for Western Pond Turtle</p>
<p><b>Goal 8: Compensate for loss of occupied covered shrimp habitat</b></p> <p><b>Objective 8.1.</b> Preserve occupied habitat within the Preserve System at a ratio of 3:1 or dedicate an equivalent number of mitigation bank credits</p> <p><b>Objective 8.2.</b> Restore suitable habitat within the Preserve System at a ratio of 2:1 or dedicate an equivalent number of mitigation bank credits</p>	<p><b>Conservation Measure 3.8.</b> Compensate for Loss of Occupied Covered Shrimp Habitat</p>
<p><b>Goal 9: Protect populations of adobe navarretia within wetlands</b></p> <p><b>Objective 9.1.</b> Identify, protect, and maintain populations of adobe navarretia in the inventory area</p>	<p><b>Conservation Measure 1.1.</b> Acquire Lands for Preserve System</p>

Table 5-1. Continued

Covered Species Expected to Benefit from Grassland Biological Goals and Objectives	
San Joaquin kit fox	Recurved larkspur
Townsend’s big-eared bat	Round-leaved filaree
Western burrowing owl	Showy madia [Oak woodland]
Golden eagle	Swainson’s hawk [Streams and Riparian woodland/scrub]
Silvery legless lizard	Tricolored blackbird [Wetlands]
Big tarplant	Alameda whipsnake [Chaparral/scrub]
San Joaquin spearscale	Western pond turtle [Wetlands]
Brittlescale	California tiger salamander [Wetlands]
	California red-legged frog [Wetlands]

Grassland Biological Goals and Objectives	Conservation Measures
<p><b>Goal 10: Preserve sufficient habitat in the inventory area to maintain viable populations of grassland-dependent covered species</b></p> <p><b>Objective 10.1.</b> Preserve 13,000 acres of annual grassland and 900 acres of alkali grassland</p> <p><b>Objective 10.2.</b> Protect native grassland alliances within the Preserve System</p>	<p><b>Conservation Measure 1.1.</b> Acquire Lands for Preserve System</p>
<p><b>Goal 11: Enhance grassland to promote native biological diversity and habitat heterogeneity</b></p> <p><b>Objective 11.1.</b> Increase the relative cover of native grasses and forbs in native grassland vegetation alliances and other grassland types</p> <p><b>Objective 11.2.</b> Increase structural diversity by creating and maintaining a mosaic of grassland types and conditions</p> <p><b>Objective 11.3.</b> Reduce the biomass, cover, and extent of exotic plants (i.e., non-native invasive plants) in the Preserve System</p>	<p><b>Conservation Measure 1.4.</b> Prepare and Implement an Exotic Plant Control Program for the Preserve System</p> <p><b>Conservation Measure 2.4.</b> Manage Grassland</p>
<p><b>Goal 12: Increase availability of burrows within grassland for San Joaquin kit fox, California tiger salamander, California red-legged frog, and western burrowing owl</b></p> <p><b>Objective 12.1.</b> Increase the number and distribution of California ground squirrel burrows</p>	<p><b>Conservation Measure 2.5.</b> Manage Natural Burrow Availability and Prey Base in Grasslands</p>



Table 5-1. Continued

Grassland Biological Goals and Objectives	Conservation Measures										
<p><b>Goal 17: Protect in the Preserve System at least 11 unprotected occurrences of grassland-dependent covered plants</b></p> <p><b>Objective 17.1.</b> Protect populations of covered plants that are at least as large and as healthy* as populations lost to covered activities</p> <p><b>Objective 17.2.</b> Protect at least two occurrences of brittlescale outside currently protected public lands</p> <p><b>Objective 17.3.</b> Protect at least three occurrences of big tarplant outside currently protected public lands</p> <p><b>Objective 17.4.</b> Protect at least two occurrences of recurved larkspur outside currently protected public lands</p> <p><b>Objective 17.5.</b> Protect at least two occurrences of round-leaved filaree outside currently protected public lands</p>	<p><b>Conservation Measure 1.1.</b> Acquire Lands for Preserve System</p>										
<p><b>Goal 18: Enhance populations of grassland-dependent covered plants</b></p> <p><b>Objective 18.1.</b> Increase population size and distribution of grassland-dependent covered plants, where feasible and biologically desirable</p>	<p><b>Conservation Measure 3.9.</b> Conduct Experimental Management to Enhance Covered Plant Populations</p>										
<p><b>Covered Species Expected to Benefit from Oak Woodland Biological Goals and Objectives:</b></p> <table border="0" style="width: 100%;"> <tr> <td style="width: 50%;">Showy madia</td> <td style="width: 50%;">California tiger salamander [Wetlands]</td> </tr> <tr> <td>San Joaquin kit fox [Grassland]</td> <td>Western pond turtle [Wetlands]</td> </tr> <tr> <td>Golden eagle [Grassland]</td> <td>Mt. Diablo fairy lantern [Chaparral/scrub]</td> </tr> <tr> <td>Silvery legless lizard [Grassland]</td> <td>Diablo helianthella [Chaparral/scrub]</td> </tr> <tr> <td>California red-legged frog [Wetlands]</td> <td>Brewer's dwarf flax [Chaparral/scrub]</td> </tr> </table>		Showy madia	California tiger salamander [Wetlands]	San Joaquin kit fox [Grassland]	Western pond turtle [Wetlands]	Golden eagle [Grassland]	Mt. Diablo fairy lantern [Chaparral/scrub]	Silvery legless lizard [Grassland]	Diablo helianthella [Chaparral/scrub]	California red-legged frog [Wetlands]	Brewer's dwarf flax [Chaparral/scrub]
Showy madia	California tiger salamander [Wetlands]										
San Joaquin kit fox [Grassland]	Western pond turtle [Wetlands]										
Golden eagle [Grassland]	Mt. Diablo fairy lantern [Chaparral/scrub]										
Silvery legless lizard [Grassland]	Diablo helianthella [Chaparral/scrub]										
California red-legged frog [Wetlands]	Brewer's dwarf flax [Chaparral/scrub]										
Oak Woodland Biological Goals and Objectives	Conservation Measures										
<p><b>Goal 19: Preserve oak woodland and oak savanna in the inventory area.</b></p> <p><b>Objective 19.1.</b> Protect 900 acres of oak woodland and oak savanna</p>	<p><b>Conservation Measure 1.1.</b> Acquire Lands for Preserve System</p>										
<p><b>Goal 20: Maintain the current canopy coverage of oaks and other native overstory trees within oak woodland and oak savanna land-cover types</b></p> <p><b>Objective 20.1.</b> Ensure tree recruitment and age structure are adequate to replace lost trees and maintain canopy coverage</p> <p><b>Objective 20.2.</b> Reduce competition between tree seedlings and other plants to enhance survival rates of tree seedlings and saplings</p>	<p><b>Conservation Measure 1.4.</b> Prepare and Implement an Exotic Plant Control Program for the Preserve System</p> <p><b>Conservation Measure 2.6.</b> Manage Oak Woodland and Oak Savanna</p>										

Table 5-1. Continued

Oak Woodland Biological Goals and Objectives	Conservation Measures						
<p><b>Goal 21: Enhance oak woodland and oak savanna to promote biological diversity and habitat heterogeneity</b></p> <p><b>Objective 21.1.</b> Increase the proportion of native species in oak woodland and oak savanna understories</p> <p><b>Objective 21.2.</b> Leave in place snags, dead trees, and downed wood</p>	<p><b>Conservation Measure 2.6.</b> Manage Oak Woodland and Oak Savanna</p>						
<p><b>Goal 22: Restore oak savanna to compensate for its loss from covered activities</b></p> <p><b>Objective 22.1.</b> Replace oak savanna vegetation alliances (in kind) that are lost to covered activities at a ratio of 1:1</p> <p><b>Objective 22.2</b> Establish within 50 years of initiating restoration a sufficient number of blue or valley oak trees to provide a percent tree canopy cover equal to or up to 10% greater than the percent canopy cover in oak savanna stands removed by covered activities</p>	<p><b>Conservation Measure 1.1.</b> Acquire Lands for Preserve System</p> <p><b>Conservation Measure 2.7.</b> Compensate for loss of Oak Savanna</p>						
<p><b>Goal 23: Protect populations of showy madia within oak woodland and grassland.</b></p> <p><b>Objective 23.1.</b> Identify and maintain or increase populations of showy madia in the inventory area</p>	<p><b>Conservation Measure 1.1.</b> Acquire Lands for Preserve System</p> <p><b>Conservation Measure 3.9.</b> Conduct Experimental Management to Enhance Covered Plant Populations</p>						
<p><b>Covered Species Expected to Benefit from Chaparral/Scrub Biological Goals and Objectives</b></p> <table border="0" style="width: 100%;"> <tr> <td style="width: 50%;">Alameda whipsnake</td> <td style="width: 50%;">Diablo helianthella</td> </tr> <tr> <td>Mount Diablo manzanita</td> <td>Brewer's dwarf flax</td> </tr> <tr> <td>Mount Diablo fairy lantern</td> <td></td> </tr> </table>		Alameda whipsnake	Diablo helianthella	Mount Diablo manzanita	Brewer's dwarf flax	Mount Diablo fairy lantern	
Alameda whipsnake	Diablo helianthella						
Mount Diablo manzanita	Brewer's dwarf flax						
Mount Diablo fairy lantern							
Chaparral/Scrub Biological Goals and Objectives	Conservation Measures						
<p><b>Goal 24: Preserve chaparral/scrub in the inventory area</b></p> <p><b>Objective 24.1.</b> Protect 550 acres of chaparral/scrub that support a diversity of native plant alliances including chaparral, California sage scrub, and black sage scrub</p>	<p><b>Conservation Measure 1.1.</b> Acquire Lands for Preserve System</p>						
<p><b>Goal 25: Enhance chaparral/scrub to promote native biological diversity and habitat heterogeneity</b></p> <p><b>Objective 25.1.</b> Maintain or mimic the natural fire regime</p> <p><b>Objective 25.2.</b> Maintain a mosaic of stand ages and species composition across the landscape</p> <p><b>Objective 25.3.</b> Promote canopy gaps within chaparral/scrub patches</p>	<p><b>Conservation Measure 2.8.</b> Manage Chaparral/Scrub</p>						

Table 5-1. Continued

<b>Chaparral/Scrub Biological Goals and Objectives</b>	<b>Conservation Measures</b>				
<p><b>Goal 26: Contribute substantially to the recovery of Alameda whipsnake in the inventory area by protecting and enhancing chaparral/scrub</b></p> <p><b>Objective 26.1.</b> Preserve an average of 70% of currently unprotected core and perimeter whipsnake habitat in Subzones 2a, 2b, 2c, 3a, and Zone 4</p> <p><b>Objective 26.2.</b> Preserve whipsnake movement habitat between patches of core whipsnake habitat, including the linkage in Zone 2 and Subzone 3a between Black Diamond Mines Regional Preserve and Mount Diablo State Park</p> <p><b>Objective 26.3.</b> Maintain diverse canopy-coverage stages</p>	<p><b>Conservation Measure 1.1.</b> Acquire Lands for Preserve System</p> <p><b>Conservation Measure 2.8.</b> Manage Chaparral/Scrub</p>				
<p><b>Goal 27: Protect in the Preserve System at least eight occurrences of chaparral-dependent covered plants</b></p> <p><b>Objective 27.1.</b> Protect populations of covered plants that are at least as large and as healthy* as populations lost to covered activities</p> <p><b>Objective 27.2.</b> Protect at least two occurrences of Mt. Diablo manzanita outside currently protected public lands</p> <p><b>Objective 27.3.</b> Protect at least two occurrences of Diablo helianthella outside currently protected public lands</p> <p><b>Objective 27.4.</b> Protect at least three occurrences of Brewer’s dwarf flax outside currently protected public lands</p> <p><b>Objective 27.5.</b> Protect at least one occurrence of Mount Diablo fairy lantern outside currently protected public lands</p>	<p><b>Conservation Measure 1.1.</b> Acquire Lands for Preserve System</p>				
<p align="center"><b>Covered Species Expected to Benefit from Streams and Riparian Woodland/Scrub Biological Goals and Objectives</b></p> <table border="0" style="width: 100%;"> <tr> <td style="width: 50%;">Swainson’s hawk</td> <td style="width: 50%;">Western pond turtle [Wetlands]</td> </tr> <tr> <td>Foothill yellow-legged frog</td> <td>California red-legged frog [Wetlands]</td> </tr> </table>		Swainson’s hawk	Western pond turtle [Wetlands]	Foothill yellow-legged frog	California red-legged frog [Wetlands]
Swainson’s hawk	Western pond turtle [Wetlands]				
Foothill yellow-legged frog	California red-legged frog [Wetlands]				
<b>Streams and Riparian Woodland/Scrub Biological Goals and Objectives</b>	<b>Conservation Measures</b>				
<p><b>Goal 28: Preserve streams and riparian woodland /scrub in the inventory area</b></p> <p><b>Objective 28.1.</b> Protect a minimum of 5 linear miles of stream to compensate for permanent loss of habitat</p> <p><b>Objective 28.2.</b> Acquire riparian/scrub at a ratio of 2:1 (estimated to be 70 acres for maximum urban development area) and protect as part of the Preserve System</p>	<p><b>Conservation Measure 1.1.</b> Acquire Lands for Preserve System</p>				

Table 5-1. Continued

Streams and Riparian Woodland/Scrub Biological Goals and Objectives	Conservation Measures
<p><b>Goal 29: Enhance riparian woodland/scrub to promote native biological diversity and habitat heterogeneity</b></p> <p><b>Objective 29.1.</b> Maintain or increase the cover, width, and connectivity of existing riparian vegetation consistent with current stream and habitat function</p> <p><b>Objective 29.2.</b> Reduce the biomass, cover, and extent of exotic plants in the Preserve System</p>	<p><b>Conservation Measure 1.4.</b> Prepare and Implement an Exotic Plant Control Program for the Preserve System</p> <p><b>Conservation Measure 2.9.</b> Manage Streams and Riparian Woodland/Scrub</p> <p><b>Conservation Measure 2.10.</b> Restore Streams and Riparian Woodland/Scrub to Compensate for Habitat Loss and to Increase Biodiversity</p>
<p><b>Goal 30: Maintain and enhance instream aquatic habitat for covered species and native fish</b></p> <p><b>Objective 30.1.</b> Promote the natural disturbance regime (e.g., flooding, sediment deposition, and scour)</p> <p><b>Objective 30.2.</b> Reduce water temperature and temperature variation</p> <p><b>Objective 30.3.</b> Increase inputs of organic matter where appropriate</p> <p><b>Objective 30.4.</b> Reduce sediment input and downstream sediment transport and deposition, where appropriate</p> <p><b>Objective 30.5.</b> Maintain and enhance instream structural diversity, where appropriate</p> <p><b>Objective 30.6.</b> Improve stream flow and connectivity for native aquatic wildlife</p> <p><b>Objective 30.7.</b> Control or reduce non-native animals including bullfrogs and fish</p>	<p><b>Conservation Measure 2.9.</b> Manage Streams and Riparian Woodland/Scrub</p> <p><b>Conservation Measure 2.10.</b> Restore Streams and Riparian Woodland/Scrub to Compensate for Habitat Loss and to Increase Biodiversity</p>
<p><b>Goal 31: Restore streams and riparian woodland/scrub</b></p> <p><b>Objective 31.1.</b> Restore at least 20 acres of riparian woodland/scrub in addition to that required above as compensation for habitat loss</p> <p><b>Objective 31.2.</b> Replace riparian woodland/scrub at a ratio of 1:1 in the Preserve System to compensate for its loss from covered activities (estimated to be 30 acres with maximum urban development area)</p> <p><b>Objective 31.3.</b> Restore species richness and diversity, vegetative cover, wildlife habitat function and hydrologic function</p> <p><b>Goal 32: Maintain or increase population size and distribution of Swainson's hawk in the inventory area</b></p> <p><b>Objective 32.1.</b> Acquire land in the Preserve System that includes occupied nests and suitable nest sites</p> <p><b>Objective 32.2.</b> Acquire at least 3,750 acres of modeled suitable foraging habitat for Swainson's Hawk near Kellogg Creek, near Marsh Creek, adjacent to Dutch Slough, or in suitable grassland areas</p>	<p><b>Conservation Measure 2.9.</b> Manage Streams and Riparian Woodland/Scrub</p> <p><b>Conservation Measure 2.10.</b> Restore Streams and Riparian Woodland/Scrub to Compensate for Habitat Loss and to Increase Biodiversity</p> <p><b>Conservation Measure 1.1.</b> Acquire Lands for Preserve System</p>

Table 5-1. Continued

<b>Streams and Riparian Woodland/Scrub Biological Goals and Objectives</b>	<b>Conservation Measures</b>
<p><b>Goal 33: Protect, maintain, or increase populations of foothill yellow-legged frog</b></p> <p><b>Objective 33.1.</b> Acquire land in Zone 4 along the upper reaches of Marsh Creek where high-quality breeding and dispersal habitat for foothill yellow-legged frog exists</p>	<p><b>Conservation Measure 1.1.</b> Acquire Lands for Preserve System</p>

\* Healthy populations of plants are defined by physical condition, age structure, reproductive success, diversity and availability of suitable habitat, long-term observation of population.

## Past and Current Grant Funded Research Efforts

1/2023

Organization	Amount	Source	Topic	Dates
San Francisco Estuary Institute / Conservancy / Contra Costa Watershed Forum	\$270,000	CA Dept. of Fish and Wildlife & CA Coastal Conservancy	Historical Ecology of East Contra Costa County	Complete 2011
East Bay Regional Park District (EBRPD)	\$140,000	Moore Foundation	Monitoring Golden Eagle movement patterns and interactions with turbines in the Vasco/Altamont Wind Resource Area	Complete 2017
East Bay Regional Park District (EBRPD)	\$110,000	Moore Foundation	Bat mortality associated with Wind Turbine in the Vasco/Altamont Wind Resource Area	Complete 2018
Nomad Ecology	\$50,000	CA Dept. of Fish and Wildlife	Rare plant management/Invasive plant control	Complete 2018
East Bay Regional Park District (EBRPD)/ Conservancy/Vollmar Consulting	\$121,691	U.S. Bureau of Reclamation/ U.S. Fish and Wildlife	This is a proposal to study longhorn fairy shrimp. The selected sites are not on Conservancy Preserve properties -- they are adjacent, at Vasco Caves and on CCWD property.	Complete 2021
Nomad Ecology	\$50,000	CA Dept. of Fish and Wildlife	Developing weed mapping techniques using remote sensing	Complete 2019
East Bay Regional Park District	\$5,502	HCP/NCCP grant program	Fossorial mammal burrow monitoring in Vasco Caves and Vasco Hills Regional Preserves	Complete 2022
East Bay Regional Park District	\$9,960	HCP/NCCP grant program	Repeat Raptor Surveys of 2006-2007 to Measure Responses to wind turbine decommissioning	Complete 2022
United States Geological Survey/East Bay Regional Park District	\$14,970	HCP/NCCP grant program	Study of Ecological Requirements and Conservation Priorities for Golden Eagles	Complete 2020
San Francisco State University	\$5,000	HCP/NCCP grant program	Analyzing Fungal Disease Risk of California Tiger Salamander	Incomplete 2021
Nomad Ecology	\$48,000	CA Dept. of Fish and Wildlife	Burrowing owl population survey of Byron/Vasco area.	Complete 2019
East Bay Regional Park District / Smallwood	\$110,000	Moore Foundation	Dog Detections of Bat and Bird Fatalities in the Altamont	Complete 2020
Save Mount Diablo	\$30,000	HCP/NCCP grant program	Manzanita and Pine Tree Die off on Mount Diablo	Complete 2022

Note: These efforts listed in the table above are independent of the Conservancy's ongoing preserve management and monitoring activities of restoration projects and the preserve.

Note: Cells in grey are funded through the Conservancy's small grant program